



## Pizza for a Cause

Join us for our first fundraiser of the 2016-2017 academic year on Monday, September 12 (Move-In Day) at California Pizza Kitchen in Westwood! This will be an ALL DAY event from 11:00 am-9:00 pm

Present a copy of the flyer to your server (see page 4), and CPK will donate 20% of your check to the Pathway Student Scholarship Fund.

Not able to join us on September 12 but would like to donate to the Scholarship Fund? Please [click here](#) to be directed to the donation website.

We hope to see you all there!

## MOVING IN

All students will be moving in on Monday September 12. Please plan on arriving at your assigned time. If you cannot make the time that has been reserved for you, please let us know as soon as possible so we can reschedule you. It is important that you adhere to this time so that all students can be supported efficiently.

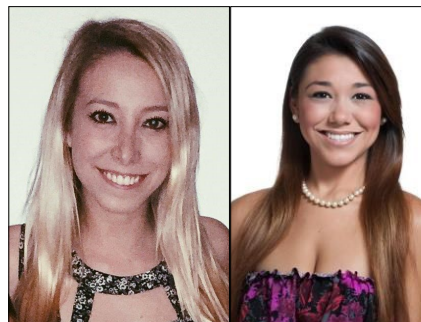


## Our Volunteer Team is Expanding!

This summer our team expanded to include 2 new faces on our volunteer staff! Please welcome Jarrah Korba and Alexandre Kurokawa who will be helping us in the coming year as Program Support Assistants.

Alexandre is a student at Santa Monica College with plans to eventually transfer to UCLA. This summer she was selected for the National Community College Scholars program—a competitive opportunity with NASA.

Jarrah joined the team last spring as an Educational Coach. She is an undergraduate student at UCLA who has also been working at the John Wooden Center alongside some of our students.



Left to Right: Jarrah Korba and Alexandre Kurokawa

As Program Support Assistants, Jarrah and Alexandre will be helping us with various administrative tasks, as well as providing hands-on academic support and advising to our students.

Welcome to the team!



## PATHWAY YEARBOOK

2016-2017

### Quarterly Meal Plans

Students may purchase meal plans for fall quarter on Monday, September 19, 2016. Any student needing support should meet in the apartment lobby at 9:00 AM to be escorted to the Housing office.

The UCLA Housing Cashiers Office will only be able to accept CASH or CHECK. **Checks should be made payable to UC Regents.**

On Monday, September 19, meal plan prices will be as follows:

**Monday—Sunday options:**

14 meals per week—\$1,701.00

7 meals per week—\$850.50

**Monday—Friday options:**

10 meals per week—\$1,260.00

5 meals per week—\$630.00

Please email the Pathway office to let us know which meal plan (if any) your student plans to purchase so that we can plan accordingly. Please also let us know if your student will be purchasing meal plans anytime after September 19 as prices will change.

Yearbooks will be sold this year for \$25 each through Friday, March 24. Yearbooks ordered after March 24 will be sold for \$35 while supplies last. All yearbooks will be distributed during the first week of June.

Orders may be placed with Wendy or Alexandre. Payments can now be made via cash or check to the Pathway office. Checks (for yearbooks ONLY) should be made payable to: Pathway Club. Receipts are available upon request.

If you take any great photos of school and community events that you would like to see in the yearbook, please send them in! Our photographers can't be everywhere, so we're calling on you to help us get as many photos as possible to create a terrific yearbook.

**To submit your photos, email them to:**

**[pathwayunex@gmail.com](mailto:pathwayunex@gmail.com)**

The Yearbook Staff will review all photos and determine final content. We cannot guarantee that all submissions will be used in the book.



## SAVE THE DATE

Mark your calendars for UCLA's Bruin Family Weekend from October 21–23, 2016. Please keep an eye out on your emails for your invitation in early October. For more information, please visit: [bruinfamilyweekend.ucla.edu](http://bruinfamilyweekend.ucla.edu)



BLACK FRIDAY. CYBER MONDAY.  
#GIVINGTUESDAY™

Nov. 29, 2016

SAVE THE DATE

### Are you connected?

Our website got a new look (again)!  
[education.uclaextension.edu/pathway](http://education.uclaextension.edu/pathway)



PathwayUclaExtension



@UCLAExtensionPW

## Important Dates for Fall 2016

**September 19:** Meal plans may now be purchased

**September 22:** Instruction begins

**November 11:** Veterans Day holiday—CAMPUS CLOSED

**November 24 & 25:** Thanksgiving Day holiday—CAMPUS CLOSED. Residential support will not be available these days.

**November 26:** Residential support will resume at 7:00 PM

**December 9:** Quarter ends

**December 10—January 1:** Evening residential support will NOT be available. Students wishing to remain in the apartments during this time should discuss their intent with Michael Harley for the coordination of any needed Supported Living Services (SLS) through the regional center or via private pay.

**December 15:** Tuition deadline for Winter quarter. Payments received after the tuition deadline will affect enrollments.

**January 2:** Residential support will resume at 7:00 PM.

# Pizza with a purpose.

**Bring in this flyer**, present it to your server, and we'll donate **20%** of your check to the organization listed below. Purchases include dine in, take out, catering and all beverages.

**FUNdraiser in support of:**

## **Pathway Student Scholarship Fund**

\*Don't have a flyer? Show us this flyer on your smart phone.

**Monday September 12th, 2016**

**ALL DAY EVENT!**

**Valid at the following locations:**

**CPK Westwood (310) 209-9197**

**1001 Broxton Av, Los Angeles, 90024**

Join the **Pizza Dough™ Rewards program** on your next visit or at **cpk.com** and receive a **free** Small Plate for registering.



**california  
PIZZA KITCHEN**

FUNdraiser offer valid only on the date(s) and at the CPK location identified on the flyer. Only 501c organizations and non-profits schools are eligible to participate in CPK's FUNdraiser program. CPK will donate twenty percent of food and beverage sales to the organization. Tax, gratuity, gift card and retail sales are excluded from the donation. Offer valid for dine in, take out, online, catering or curbside orders. Not valid for delivery orders. Offer void if flyer is distributed in or near restaurant. For more information about the 501c organization participating in the FUNdraiser, please contact the organization directly.

